



## TECHNICAL RANGE

### *EMBOSSED FLOORING*

**BEIGE PPE 147**

*EN 685/34 | EN 685/43*

Available in Rolls

Thickness : 1mm - 3mm

Roll Width :- upto 2 mtrs.

Reduction Ratio - 1:8 (apprx.)

*Shade may vary slightly due to technical reasons*



## TECHNICAL RANGE

### *EMBOSSED FLOORING*

**BEIGE PPE 160**

*EN 685/34 | EN 685/43*

Available in Rolls

Thickness : 1mm - 3mm

Roll Width :- upto 2 mtrs.

Reduction Ratio - 1:8 (apprx.)

*Shade may vary slightly due to technical reasons*



## TECHNICAL RANGE

### *EMBOSSED FLOORING*

**TVS GREY PPE 216**

*EN 685/34 | EN 685/43*

Available in Rolls

Thickness : 1mm - 3mm

Roll Width :- upto 2 mtrs.

Reduction Ratio - 1:8 (apprx.)

*Shade may vary slightly due to technical reasons*



## TECHNICAL RANGE

### *EMBOSSED FLOORING*

**TVS GREY PPE 220**

*EN 685/34 | EN 685/43*

Available in Rolls

Thickness : 1mm - 3mm

Roll Width :- upto 2 mtrs.

Reduction Ratio - 1:8 (apprx.)

*Shade may vary slightly due to technical reasons*



## TECHNICAL RANGE

### *EMBOSSED FLOORING*

**BEIGE RME 468**

*EN 685/34 | EN 685/43*

Available in Rolls

Thickness : 1mm - 3mm

Roll Width :- upto 2 mtrs.

Reduction Ratio - 1:8 (apprx.)

*Shade may vary slightly due to technical reasons*



## TECHNICAL RANGE

### *EMBOSSED FLOORING*

**BL. GREY PPE 147**

*EN 685/34 | EN 685/43*

Available in Rolls

Thickness : 1mm - 3mm

Roll Width :- upto 2 mtrs.

Reduction Ratio - 1:8 (apprx.)

*Shade may vary slightly due to technical reasons*



## TECHNICAL RANGE

### *EMBOSSED FLOORING*

**BL. GREY PPE 160**

*EN 685/34 | EN 685/43*

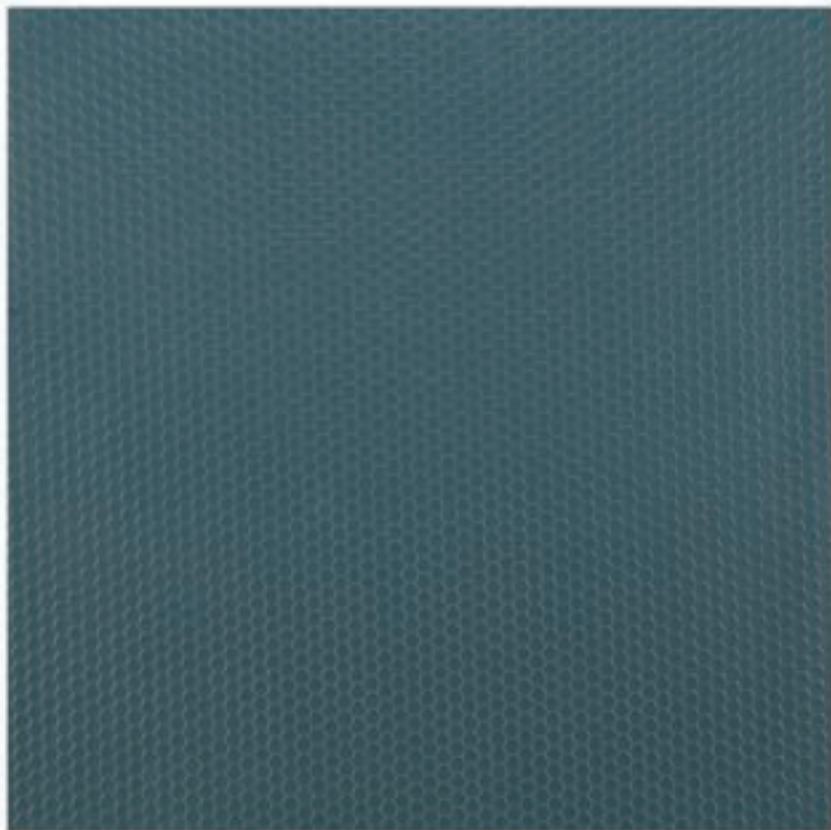
Available in Rolls

Thickness : 1mm - 3mm

Roll Width :- upto 2 mtrs.

Reduction Ratio - 1:8 (apprx.)

*Shade may vary slightly due to technical reasons*



## TECHNICAL RANGE

### *EMBOSSED FLOORING*

**BL. GREY PPE 216**

*EN 685/34 | EN 685/43*

Available in Rolls

Thickness : 1mm - 3mm

Roll Width :- upto 2 mtrs.

Reduction Ratio - 1:8 (apprx.)

*Shade may vary slightly due to technical reasons*



## TECHNICAL RANGE

### *EMBOSSED FLOORING*

**BL. GREY RME 468**

*EN 685/34 | EN 685/43*

Available in Rolls

Thickness : 1mm - 3mm

Roll Width :- upto 2 mtrs.

Reduction Ratio - 1:8 (apprx.)

*Shade may vary slightly due to technical reasons*



## TECHNICAL RANGE

### *EMBOSSED FLOORING*

**BL. GREY RME 475**

*EN 685/34 | EN 685/43*

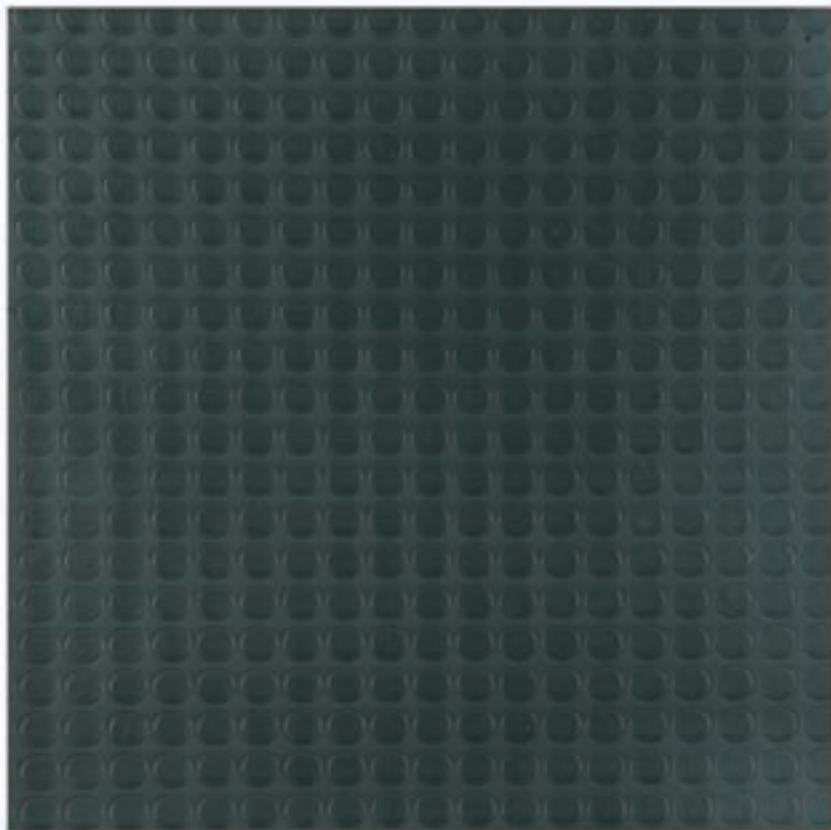
Available in Rolls

Thickness : 1mm - 3mm

Roll Width :- upto 2 mtrs.

Reduction Ratio - 1:8 (apprx.)

*Shade may vary slightly due to technical reasons*



## TECHNICAL RANGE

### *EMBOSSED FLOORING*

**BLACK PPE 195**

*EN 685/34 | EN 685/43*

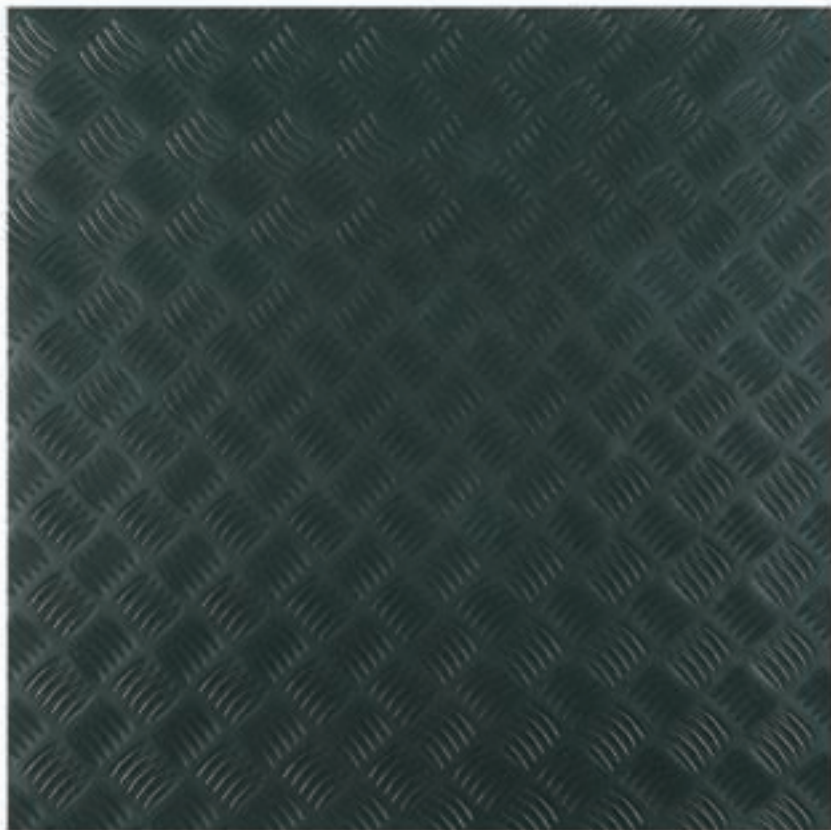
Available in Rolls

Thickness : 1mm - 3mm

Roll Width :- upto 2 mtrs.

Reduction Ratio - 1:8 (apprx.)

*Shade may vary slightly due to technical reasons*



## TECHNICAL RANGE

### *EMBOSSED FLOORING*

**BLACK PPE 220**

*EN 685/34 | EN 685/43*

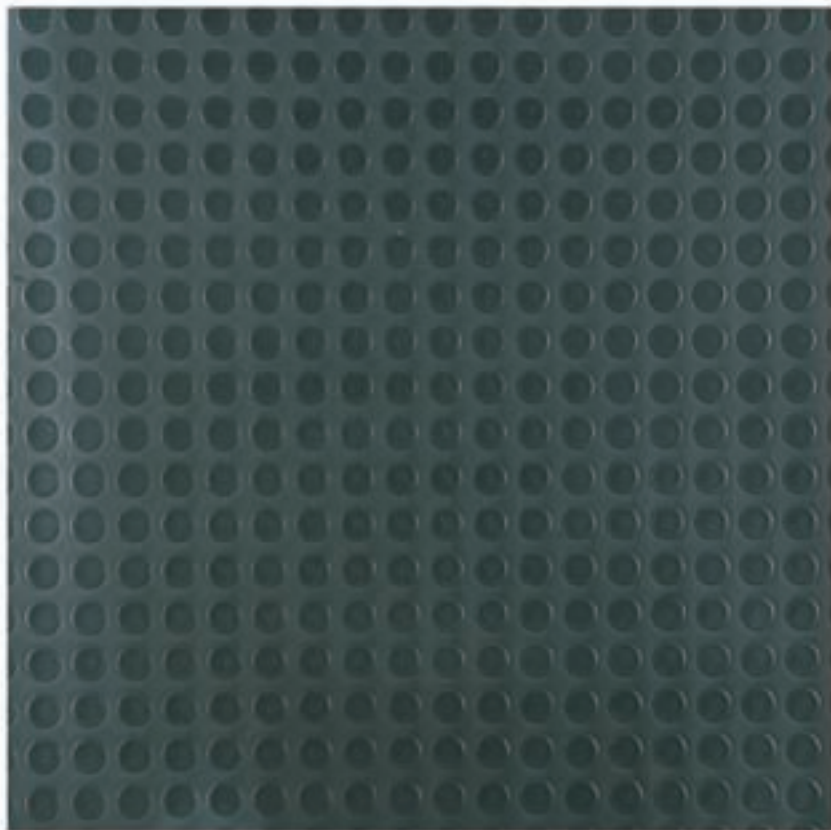
Available in Rolls

Thickness : 1mm - 3mm

Roll Width :- upto 2 mtrs.

Reduction Ratio - 1:8 (apprx.)

*Shade may vary slightly due to technical reasons*



## TECHNICAL RANGE

### *EMBOSSED FLOORING*

**BLACK RME 475**

*EN 685/34 | EN 685/43*

Available in Rolls

Thickness : 1mm - 3mm

Roll Width :- upto 2 mtrs.

Reduction Ratio - 1:8 (apprx.)

*Shade may vary slightly due to technical reasons*

# TECHNICAL RANGE

## *EMBOSED FLOORING*

**BLUE PPE 195**

*EN 685/34 | EN 685/43*

Available in Rolls

Thickness : 1mm - 3mm

Roll Width :- upto 2 mtrs.

Reduction Ratio - 1:8 (apprx.)

*Shade may vary slightly due to technical reasons*



## TECHNICAL RANGE

### *EMBOSSED FLOORING*

**BROWN PPE 220**

*EN 685/34 | EN 685/43*

Available in Rolls

Thickness : 1mm - 3mm

Roll Width :- upto 2 mtrs.

Reduction Ratio - 1:8 (apprx.)

*Shade may vary slightly due to technical reasons*



## TECHNICAL RANGE

### *EMBOSSED FLOORING*

**BROWN RME 475**

*EN 685/34 | EN 685/43*

Available in Rolls

Thickness : 1mm - 3mm

Roll Width :- upto 2 mtrs.

Reduction Ratio - 1:8 (apprx.)

*Shade may vary slightly due to technical reasons*



## TECHNICAL RANGE

### *EMBOSSED FLOORING*

**DK. GREY PPE 216**

*EN 685/34 | EN 685/43*

Available in Rolls

Thickness : 1mm - 3mm

Roll Width :- upto 2 mtrs.

Reduction Ratio - 1:8 (apprx.)

*Shade may vary slightly due to technical reasons*



## TECHNICAL RANGE

### *EMBOSSED FLOORING*

**DK. GREY PPE 220**

*EN 685/34 | EN 685/43*

Available in Rolls

Thickness : 1mm - 3mm

Roll Width :- upto 2 mtrs.

Reduction Ratio - 1:8 (apprx.)

*Shade may vary slightly due to technical reasons*



## TECHNICAL RANGE

### *EMBOSSED FLOORING*

**DK. GREY RME 468**

*EN 685/34 | EN 685/43*

Available in Rolls

Thickness : 1mm - 3mm

Roll Width :- upto 2 mtrs.

Reduction Ratio - 1:8 (apprx.)

*Shade may vary slightly due to technical reasons*



## TECHNICAL RANGE

### *EMBOSSED FLOORING*

**GK. GREY PPE 216**

*EN 685/34 | EN 685/43*

Available in Rolls

Thickness : 1mm - 3mm

Roll Width :- upto 2 mtrs.

Reduction Ratio - 1:8 (apprx.)

*Shade may vary slightly due to technical reasons*



## TECHNICAL RANGE

### *EMBOSSED FLOORING*

**GOLD PPE 195**

*EN 685/34 | EN 685/43*

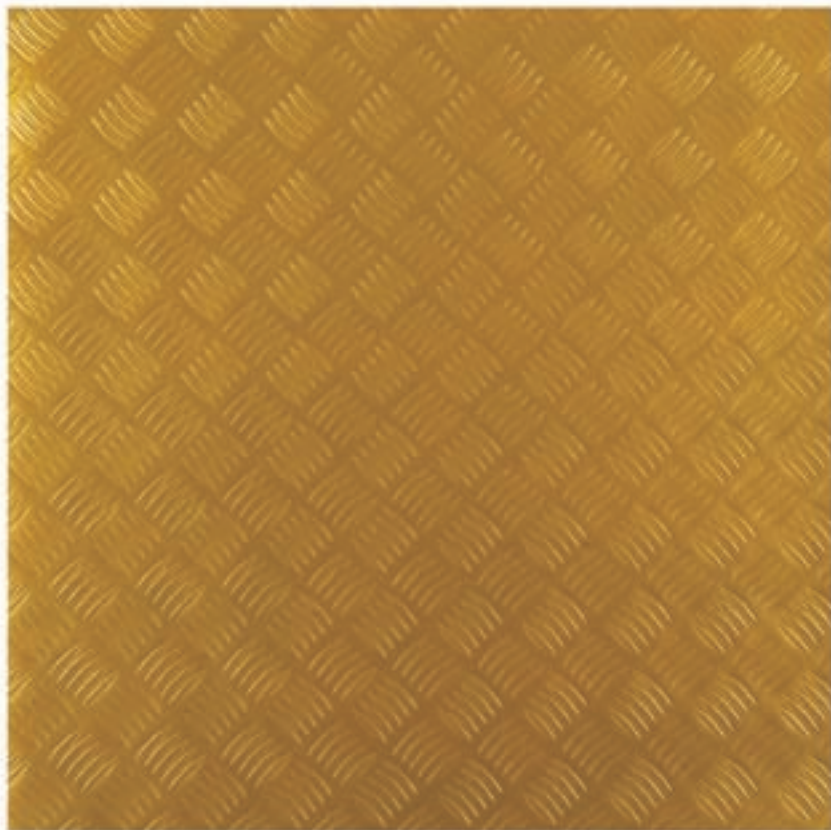
Available in Rolls

Thickness : 1mm - 3mm

Roll Width :- upto 2 mtrs.

Reduction Ratio - 1:8 (apprx.)

*Shade may vary slightly due to technical reasons*



## TECHNICAL RANGE

### *EMBOSSED FLOORING*

**GOLD PPE 220**

*EN 685/34 | EN 685/43*

Available in Rolls

Thickness : 1mm - 3mm

Roll Width :- upto 2 mtrs.

Reduction Ratio - 1:8 (apprx.)

*Shade may vary slightly due to technical reasons*



## TECHNICAL RANGE

### *EMBOSSED FLOORING*

**GREEN PPE 220**

*EN 685/34 | EN 685/43*

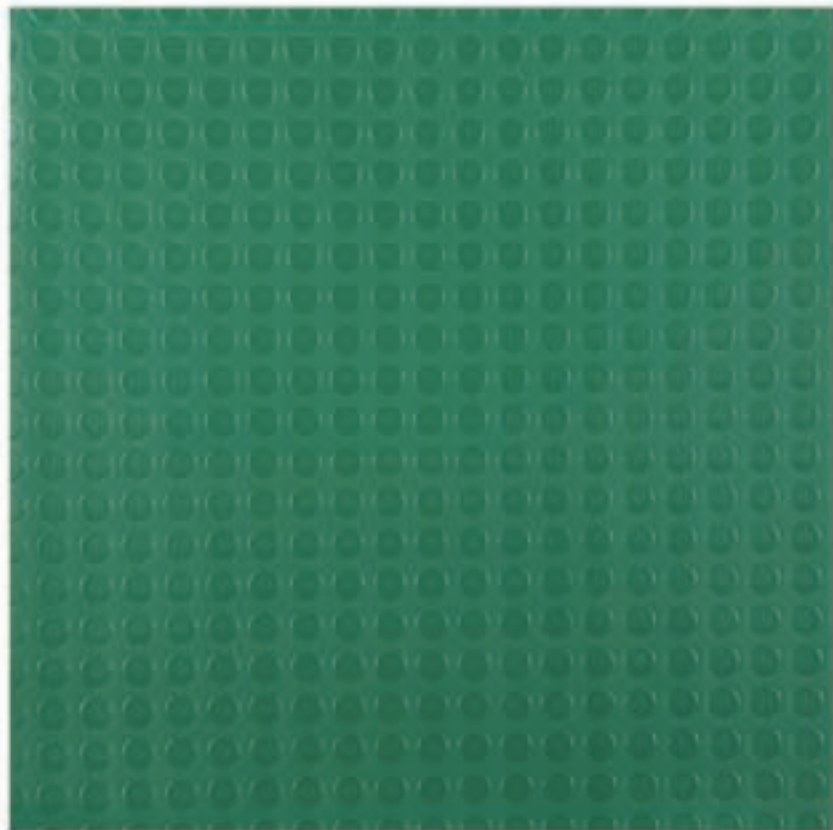
Available in Rolls

Thickness : 1mm - 3mm

Roll Width :- upto 2 mtrs.

Reduction Ratio - 1:8 (apprx.)

*Shade may vary slightly due to technical reasons*



## TECHNICAL RANGE

### *EMBOSSED FLOORING*

**GREEN RME 475**

*EN 685/34 | EN 685/43*

Available in Rolls

Thickness : 1mm - 3mm

Roll Width :- upto 2 mtrs.

Reduction Ratio - 1:8 (apprx.)

*Shade may vary slightly due to technical reasons*



## TECHNICAL RANGE

### *EMBOSED FLOORING*

**N. BLUE PPE 160**

*EN 685/34 | EN 685/43*

Available in Rolls

Thickness : 1mm - 3mm

Roll Width :- upto 2 mtrs.

Reduction Ratio - 1:8 (apprx.)

*Shade may vary slightly due to technical reasons*



## TECHNICAL RANGE

### *EMBOSSED FLOORING*

**N. BLUE PPE 195**

*EN 685/34 | EN 685/43*

Available in Rolls

Thickness : 1mm - 3mm

Roll Width :- upto 2 mtrs.

Reduction Ratio - 1:8 (apprx.)

*Shade may vary slightly due to technical reasons*



## TECHNICAL RANGE

### *EMBOSSED FLOORING*

**N. BLUE PPE 220**

*EN 685/34 | EN 685/43*

Available in Rolls

Thickness : 1mm - 3mm

Roll Width :- upto 2 mtrs.

Reduction Ratio - 1:8 (apprx.)

*Shade may vary slightly due to technical reasons*



## TECHNICAL RANGE

### *EMBOSSED FLOORING*

**O. BLUE RME 468**

*EN 685/34 | EN 685/43*

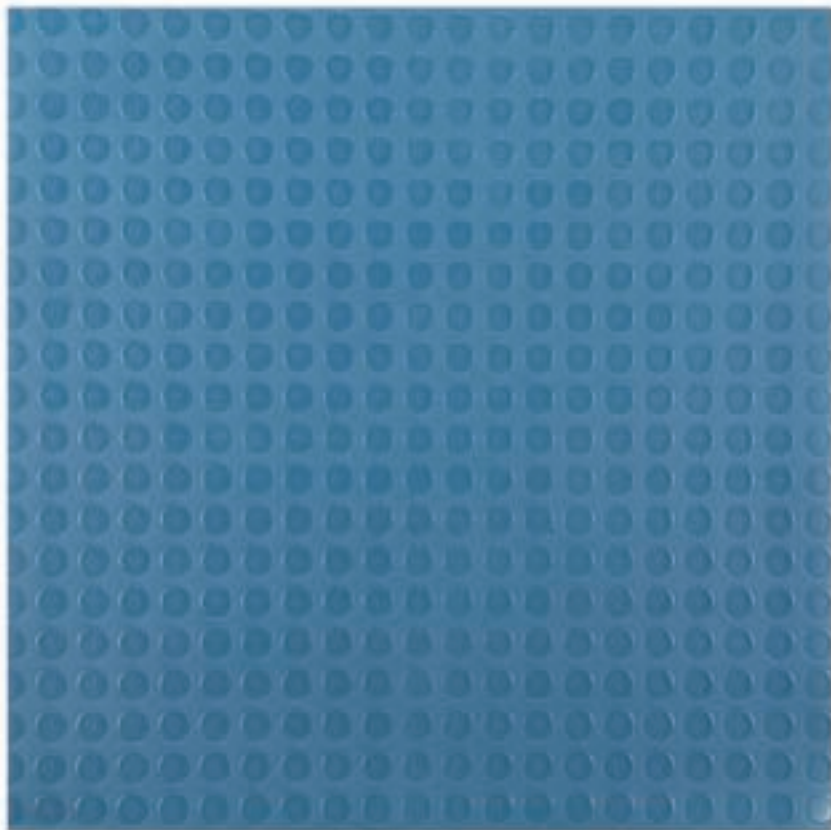
Available in Rolls

Thickness : 1mm - 3mm

Roll Width :- upto 2 mtrs.

Reduction Ratio - 1:8 (apprx.)

*Shade may vary slightly due to technical reasons*



## TECHNICAL RANGE

### *EMBOSED FLOORING*

**O. BLUE RME 475**

*EN 685/34 | EN 685/43*

Available in Rolls

Thickness : 1mm - 3mm

Roll Width :- upto 2 mtrs.

Reduction Ratio - 1:8 (apprx.)

*Shade may vary slightly due to technical reasons*



## TECHNICAL RANGE

### *EMBOSSED FLOORING*

**PAL PPE 147**

*EN 685/34 | EN 685/43*

Available in Rolls

Thickness : 1mm - 3mm

Roll Width :- upto 2 mtrs.

Reduction Ratio - 1:8 (apprx.)

*Shade may vary slightly due to technical reasons*



## TECHNICAL RANGE

### *EMBOSSED FLOORING*

**PAL PPE 216**

*EN 685/34 | EN 685/43*

Available in Rolls

Thickness : 1mm - 3mm

Roll Width :- upto 2 mtrs.

Reduction Ratio - 1:8 (apprx.)

*Shade may vary slightly due to technical reasons*



## TECHNICAL RANGE

### *EMBOSSED FLOORING*

**PAL PPE 220**

*EN 685/34 | EN 685/43*

Available in Rolls

Thickness : 1mm - 3mm

Roll Width :- upto 2 mtrs.

Reduction Ratio - 1:8 (apprx.)

*Shade may vary slightly due to technical reasons*



## TECHNICAL RANGE

### *EMBOSSED FLOORING*

**RED PPE 195**

*EN 685/34 | EN 685/43*

Available in Rolls

Thickness : 1mm - 3mm

Roll Width :- upto 2 mtrs.

Reduction Ratio - 1:8 (apprx.)

*Shade may vary slightly due to technical reasons*



## TECHNICAL RANGE

### *EMBOSSED FLOORING*

**RED PPE 220**

*EN 685/34 | EN 685/43*

Available in Rolls

Thickness : 1mm - 3mm

Roll Width :- upto 2 mtrs.

Reduction Ratio - 1:8 (apprx.)

*Shade may vary slightly due to technical reasons*

# TECHNICAL RANGE

## *EMBOSED FLOORING*

**S BLUE PPE 195**

*EN 685/34 | EN 685/43*

Available in Rolls

Thickness : 1mm - 3mm

Roll Width :- upto 2 mtrs.

Reduction Ratio - 1:8 (apprx.)

*Shade may vary slightly due to technical reasons*



## TECHNICAL RANGE

### *EMBOSSED FLOORING*

**T. COTTA RME 475**

*EN 685/34 | EN 685/43*

Available in Rolls

Thickness : 1mm - 3mm

Roll Width :- upto 2 mtrs.

Reduction Ratio - 1:8 (apprx.)

*Shade may vary slightly due to technical reasons*



## TECHNICAL RANGE

### *EMBOSSED FLOORING*

**TVS GREY PPE 160**

*EN 685/34 | EN 685/43*

Available in Rolls

Thickness : 1mm - 3mm

Roll Width :- upto 2 mtrs.

Reduction Ratio - 1:8 (apprx.)

*Shade may vary slightly due to technical reasons*



## TECHNICAL RANGE

### *EMBOSSED FLOORING*

**TVS GREY RME 468**

*EN 685/34 | EN 685/43*

Available in Rolls

Thickness : 1mm - 3mm

Roll Width :- upto 2 mtrs.

Reduction Ratio - 1:8 (apprx.)

*Shade may vary slightly due to technical reasons*



## TECHNICAL RANGE

### *EMBOSSED FLOORING*

**TVS GREY RME 475**

*EN 685/34 | EN 685/43*

Available in Rolls

Thickness : 1mm - 3mm

Roll Width :- upto 2 mtrs.

Reduction Ratio - 1:8 (apprx.)

*Shade may vary slightly due to technical reasons*